

# Welcome Back!

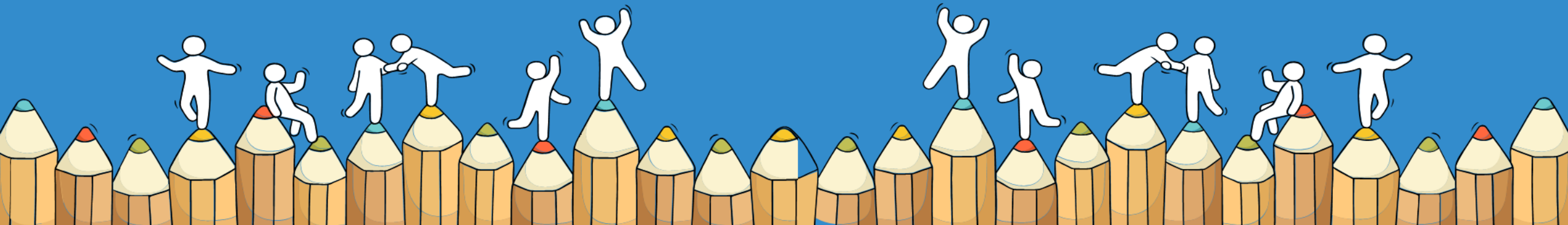
Serangoon Garden Secondary School  
Class of 2025



# Acknowledgement and Appreciation

Thank you to:

- 😊 All parents / guardians who have supported their children / wards and partnering the school to bring out the best in them.
- 😊 To all teachers who have guided our 2025 4E5N cohort by laying a strong foundation at the lower secondary level and helping them in their journey towards the national examination.



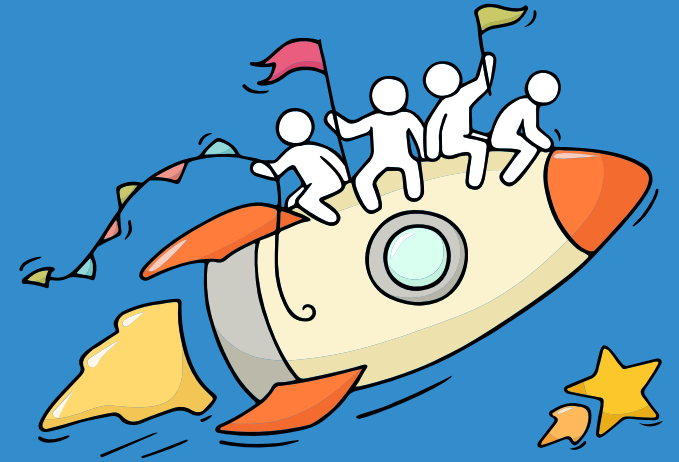
# Celebrate Efforts

The O-Level is a culmination of years of hard work and perseverance.

Let's celebrate our efforts regardless of the results.

Let's mark the end of the academic year by reflecting together on all our previous successes in school and the challenges we have overcome!

Remember that everyone's learning journey is different but we can each have a fulfilling outcome!



# Resources to support you as you receive your results

Receiving your results and making decisions about your post-secondary pathways can be exciting to some, but stressful to others.

Scan this QR code for an infographic with some helpful resources to support you.



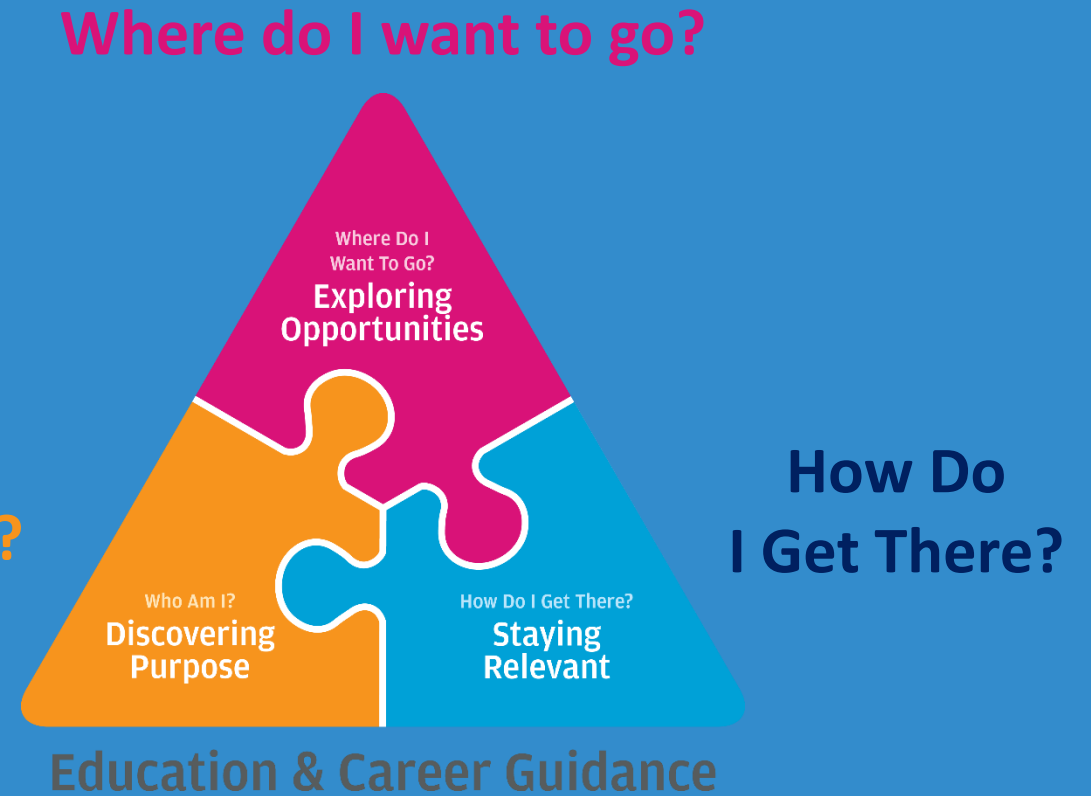
<https://go.gov.sg/olevelstudentresource>



# Thinking about Your Next Step?

Consider these questions...

Who am I?



In the infographic, you can find resources which can help you make informed decisions.

## PLANNING YOUR NEXT STEP

These resources will help you chart your path ahead:



• What's Next Brochure

<https://go.gov.sg/whats-next-olevel>



• Contact the ECG Centre @ MOE

<https://go.gov.sg/moe-ecg-centre>



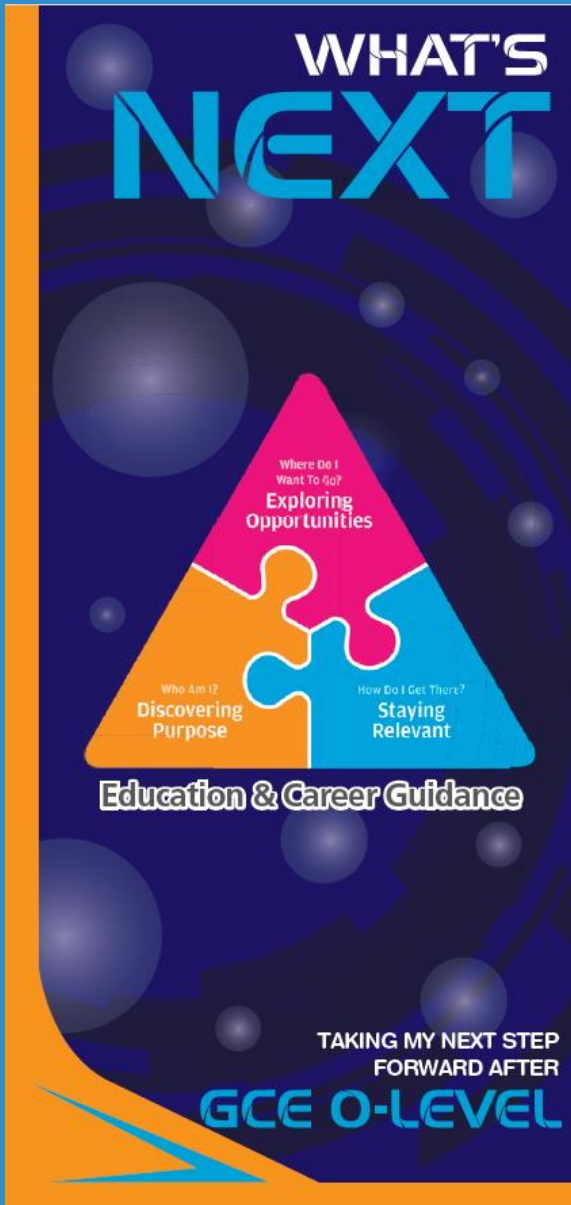
• MySkillsFuture Student Portal

<https://go.gov.sg/MySFSec>



• Chat with your school's ECG Counsellor

# Resources to help you make informed decisions



## PLANNING YOUR NEXT STEP

These resources will help you chart your path ahead:



- What's Next Brochure

<https://go.gov.sg/whats-next-olevel>



- Contact the ECG Centre @ MOE

<https://go.gov.sg/moe-ecg-centre>



- MySkillsFuture Student Portal

<https://go.gov.sg/MySFSec>



- Chat with your school's ECG Counsellor



## MySkillsFuture Student Portal

Use the information and tools to explore various education and career pathways and take charge of your future.

# Additional resources to help you make informed decisions



## About Discover On My Way:

Discover your **education and career interests** and **chart your personal and professional future** with Discover On My Way! **Explore** different careers, **connect** with industry professionals and peers, and **get firsthand exposure** at various job roles. *Let's get you on your way to Discover-ing!*

What to study?  
What career to pursue?

## Still figuring out your future?

Join programmes organised by NYC and our partners to meet professionals from various industries & youth on the same journey as you.



Learning Journey to  
\*SCAPE & ChaPanda



SEAcret Gatherings



Industry Connects With Grab SG



<https://discover.nyc.gov.sg/omw>

# Chinese Language Elective Programme

LEP	Date	LEP School	Time of LEP Briefing and/or Booth and Venue	Name and Email Address of Teacher-in-charge
CLEP	17 Jan 2026 (Sat)	Dunman High School	11.45am – 12.30pm LT1, Blk B Level 2	Mdm Hong Lan hong.lan@dhs.edu.sg
	16 Jan 2026 (Fri)	Hwa Chong Institution (College)	3.00pm – 3.30pm LT4 (College)	Ms Yeo Tan Ching yeotc@hci.edu.sg
	16 Jan 2026 (Fri)	Jurong Pioneer Junior College	10.00am – 4.00pm CLEP Room, School Hall	Mrs Tan-Lim Soh Whee tan-lim_soh_whee@moe.edu.sg
	15 Jan 2026 (Fri)	Nanyang Junior College	11.00am – 12.00pm CLEP Room	Mdm Tan Choon Yan tan_choon_yan@moe.edu.sg
	16 Jan 2026 (Fri)	Temasek Junior College	1 <sup>st</sup> session: 2.00pm 2 <sup>nd</sup> Session: 3.30pm CLEP Room (J105)	Mr Pan Xu Pam_xu@moe.edu.sg

# Malay Language Elective Programme

LEP	Date	LEP School	Time of LEP Briefing and/or Booth and Venue	Name and Email Address of Teacher-in-charge
MLEP	16 Jan 2026 (Fri)	Jurong Pioneer Junior College	10.00am – 4.00pm MLEP Booth, Hall	Mdm Siti Atiqah Punari siti_atiqah_punari@moe.edu.sg
	17 Jan 2026 (Sat)	National Junior College	1 <sup>st</sup> Session: 11.00am-11.30am 2 <sup>nd</sup> Session: 12.00pm-12.30pm Lecture Theatre 5  MLEP Booth, TA14, 10.00am-2.00pm	Ms Iryianna Ahmad iryianna_ahmad@moe.edu.sg
	15 Jan 2026 (Thurs)	Raffles Institution	10.00am-2.00pm MLEP Booth, Innovation Centre	Mr Ali Hanifiah hanifiah.a@ri.edu.sg
	15 Jan 2026 (Thurs)	Tampines Meridian Junior College	9.00am – 3.00pm MLEP Booth, Atrium (In front of LT1)	Mdm Faten Hana Bte Mustafa faten_hana_mustafa@schools.gov.sg
	15 Jan 2026 (Fri)	Yishun Innova Junior College	10.00am – 5.00pm MLEP Booth	Mdm Najmah Bte Sidik najmah_sidik@schools.gov.sg

# Tamil Language Elective Programme

LEP	Date	LEP School	Time of LEP Briefing and Venue	Name and Email Address of Teacher-in-charge
TLEP	13 Jan 2026 (Tues)	Anderson Serangoon Junior College	10.00am – 5.00pm TLEP Room (C1-1)	Mdm Kamalavani Palaiyan kamalavani_palaiyan@schools.gov.sg
	17 Jan 2026 (Sat)	National Junior College	10.00am – 2.00pm Room TA14	Mr Shahul Hameed s/o Mohamed Maideen shah_mohamed@schools.gov.sg

# OH EUNOIA

OPEN HOUSE

# 16 JAN

10 AM - 4 PM

SEE EU IN EUNOIA

VISIT OUR  
OH WEBSITE



FOLLOW US TO  
LEARN MORE





# TEMASEK JUNIOR COLLEGE

**JC OPEN HOUSE 2026**  
**16 JANUARY, FRIDAY**  
**12.30 - 4 PM**

Principal's Talk at 1.30 & 3 PM  
Performance Showcase at  
12.45 & 2 PM



*2 Tampines Ave 9*  
*Singapore 529564*



# SJI OPEN HOUSE (for JC 1 Admission in 2026)

**SAT, 17 JAN 2026**  
**9.00am – 3.00pm**  
**38 Malcolm Road**



# OPEN HOUSE 2026



**FRIDAY, 16 JANUARY 2026**  
**9AM - 1PM**  
**PRINCIPAL'S TALK @ 11 AM**

**#DOITMIway**

# Concerned About Your Next Step?

**Stop**

- Calm yourself down. Take a few deep breaths.

**Think**

- Think through the different options that are available for you. Keep things in perspective.
- Remember that the O-Level is not the end point and is only one part of your life journey.

**Do**

- Have conversations with trusted adults who know you well to advise and guide you (parents, teachers, ECG counsellor).
- Decide and act based on your options.

**When you receive your results, you may experience a range of emotions.**

**Managing these emotions well will allow you to stay calm and make rational decisions.**

# Reaching out for support is a sign of strength

If you have questions about your options or are not coping well, you can reach out to trusted adults such as your parent/guardian, teacher, School Counsellor or ECG Counsellor. You can also talk to a trusted friend.

*Who can we  
go to for ECG  
advice?*

Make an appointment to speak with  
your ECG Counsellor in school

**OR**

The ECG Centre @ MOE offers  
online or phone ECG counselling  
services. Make an appointment via  
[go.gov.sg/moe-ecg-centre](https://go.gov.sg/moe-ecg-centre)



# Support is readily available for you.

There are other hotlines and chats available if you are more comfortable seeking help using these platforms.

**SOS** provides round-the-clock emotional support for those in distress, thinking of suicide or affected by suicide.

Call: **1767**

**(24-hour helpline)**

WhatsApp: **9151 1767**

**(24-hour Care Text)**

**Community Health Assessment Team (CHAT)** provides personalised and confidential mental health checks and consultation for youths. To speak with a youth support worker, you can:

Visit: **CHAT Hub at \*Scape, 2 Orchard Link, #04-07**

Call: **6493 6500 / 6501**

Email: **chat@mentalhealth.sg**

**Mindline** is Singapore's national mental health helpline and textline service. The service is manned by trained counsellors who are ready to listen and support you.

Call: **1771**

**(24-hour helpline)**

WhatsApp: **6669 1771**

**(24-Hour messaging service via WhatsApp)**

**Carey** is an online platform by Care Corner that provides free mental health check-ins with mental health professionals. Find out more at: <https://carey.carecorner.org.sg/>

**eC2** is an e-Counselling Centre where you can talk to a trained counsellor about the issues you are facing, right where you are.

Chat with a counsellor at: [www.ec2.sg](http://www.ec2.sg)

*Monday – Friday (Excluding Public*

*Holidays): 10am – 12pm & 2pm – 5pm*

**TOUCHline** is a helpline to provide youths with emotional support and practical advice.

Call: **1800 377 2252**

*Monday- Friday (Excluding Public*

*Holidays): 9am – 6pm*





**The O-Level examination is  
one milestone in your  
education journey, and  
there are many more  
exciting pathways ahead.**

**Your future holds many  
opportunities waiting to be  
discovered!**

# Admissions Exercises

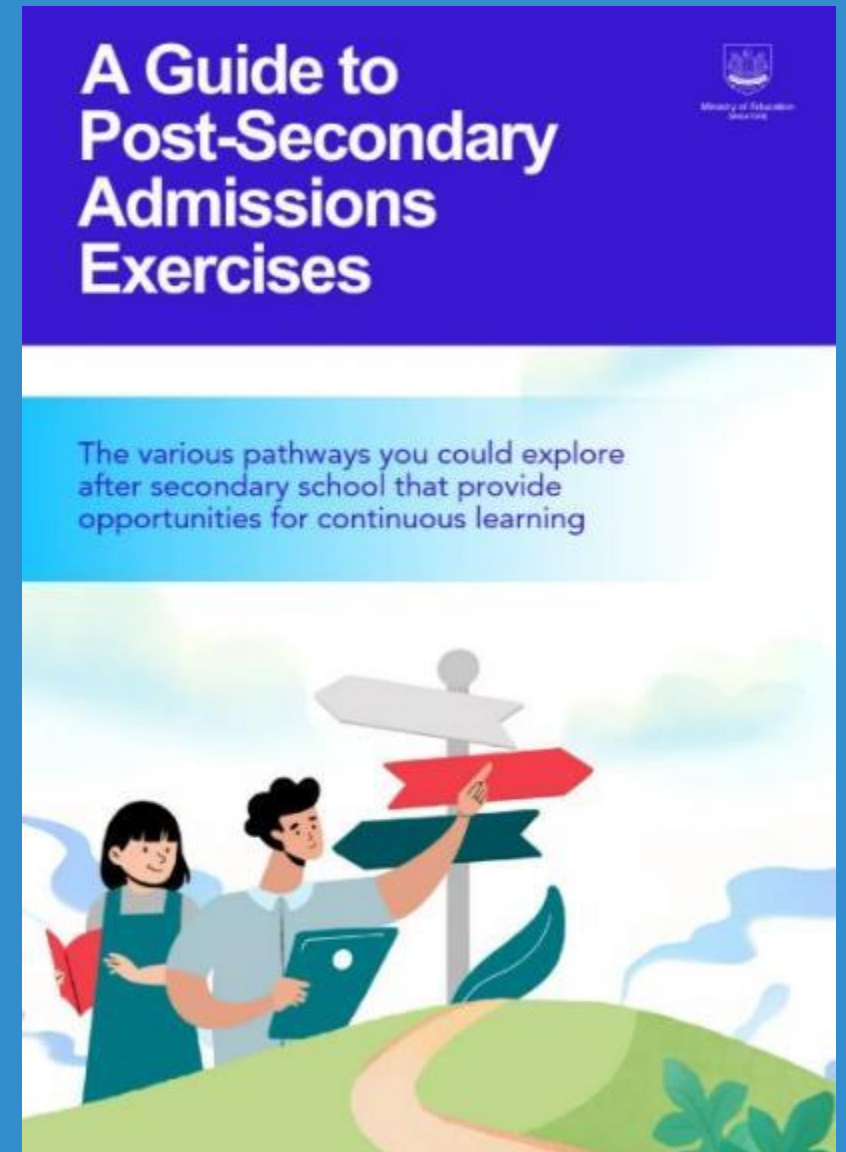
## Things to note



# Details of Admissions Exercises

You can find the details of the various admissions exercises from the **Post-Secondary Admissions Exercises** booklet that can be downloaded from:  
<https://www.moe.gov.sg/post-secondary/admissions>

- Joint Admissions Exercise (JAE)
- Joint Intake Exercise (JIE) 'O'
- Nanyang Academy of Fine Arts (NAFA)
- LASALLE College of the Arts (LASALLE)



# Resources to help students make informed decisions

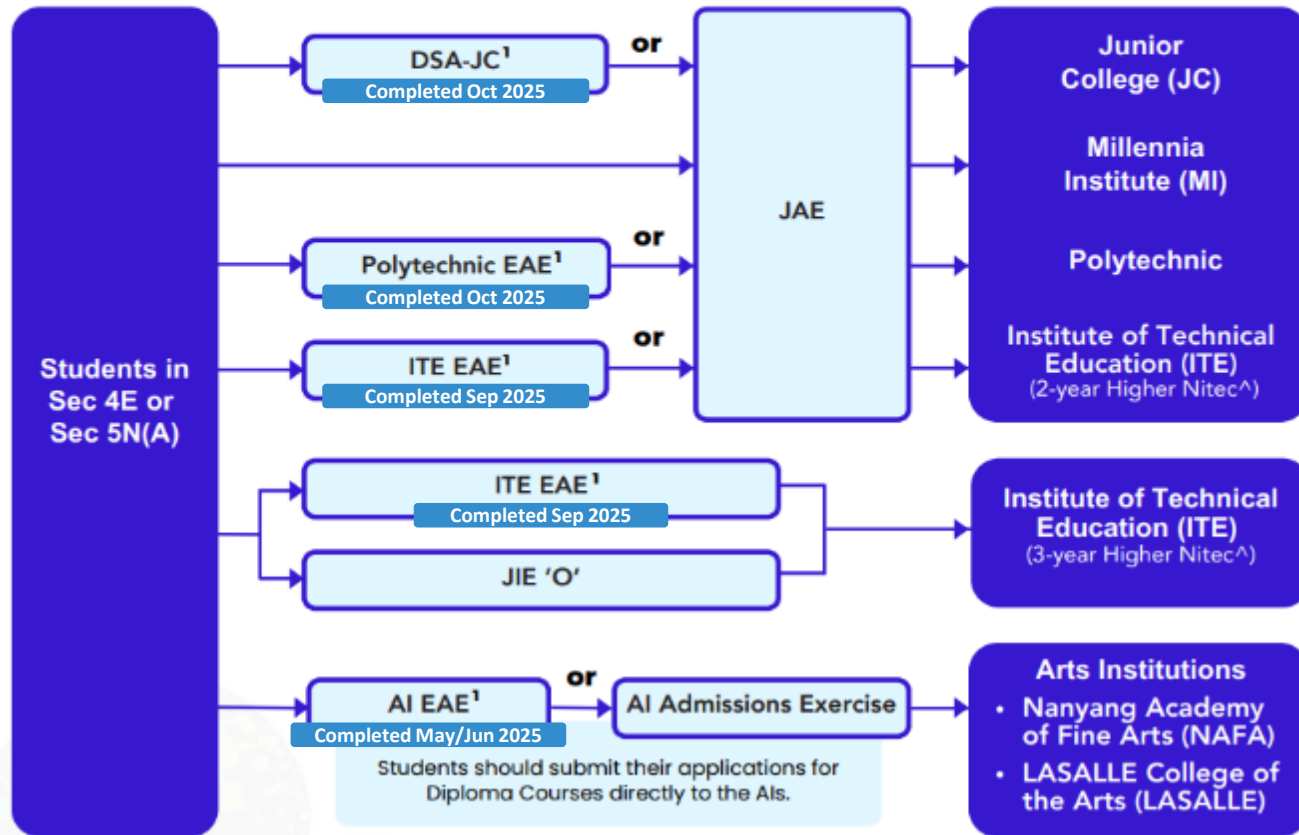
**Learn more about the  
post-secondary education institutions**



<https://moe.gov.sg/post-secondary/overview>

## Post-Secondary Admissions Exercises for Students in Sec 4 Express or Sec 5 Normal (Academic)

### Admissions exercises to take part in



Source: [Post-Secondary Admissions Exercises booklet](#)

<sup>1</sup>Students apply through these admissions exercises before their examinations.

<sup>^</sup>Please visit these websites for the list of courses for 2-year Higher Nitec:

<https://www.ite.edu.sg/current-full-time-students/progression/higher-nitec/>



for 3-year Higher Nitec:

<https://www.ite.edu.sg/secondary-school-students/ite-full-time-courses/3-year-4-year-higher-nitec>



# Details of Admissions Exercises



## JAE – Joint Admissions Exercise

JAE enables GCE O-Level holders to apply for courses offered by JCs, MI, polytechnics and ITE (2-year Higher Nitec courses).

**JAE:** <http://go.gov.sg/applyjae>



## JIE 'O' – Joint Intake Exercise 'O'

The JIE 'O' enables GCE O-Level holders to apply for the 3-year Higher Nitec courses conducted by ITE.

**JIE 'O':** <https://go.gov.sg/applyjio>

# Details of Admissions Exercises



## Arts Institutions – NAFA/LASALLE

GCE O-Level holders with the aptitude and interest to pursue the creative arts at the tertiary level may apply for diploma programmes at the Arts Institutions (AIs). Each AI runs its own admissions exercise, and interested students should apply directly to the institution.

The AIs also run their own Early Admissions Exercise, an aptitude-based admissions exercise open to graduating O-Level students, final-year Nitec and Higher Nitec students from ITE and graduating Integrated Programme (IP) / International Baccalaureate (IB) Year 4 students. This exercise allows students to apply for and receive conditional offers for admission to NAFA and LASALLE prior to receiving their final grades.

**NAFA:** <http://go.gov.sg/applynafa>

**LASALLE:** <https://go.gov.sg/applylasalle>

# Application Period

<b>Application Period</b>	<b>Oct 2025 – Mar 2026*</b>	<b>14 Jan 2026 (Wed) 4 pm to 19 Jan 2026 (Mon) 4.30 pm</b>
<b>Admissions Exercises</b>	<b>NAFA LASALLE</b>	<b>JAE JIE 'O'</b>

*\*Applications may close early once programme places have been filled.*

# JAE Application

**Choose your courses wisely. Look at the cut-off points of the courses**

The JAE-IS will be accessible from **4pm on Wednesday, 14 January 2026**, to **4.30pm on Monday, 19 January 2026** for students to submit their course choices through the JAE website at [www.moe.gov.sg/jae](http://www.moe.gov.sg/jae).

Applicants are strongly encouraged to use the JAE worksheet ([www.moe.gov.sg/jaeworksheet](http://www.moe.gov.sg/jaeworksheet)) before submitting their online application.

The JAE-IS can be accessed using Singpass.

Applicants can find more information on the following MOE websites:

- JAE website for more details on the JAE ([www.moe.gov.sg/jae](http://www.moe.gov.sg/jae))
- SchoolFinder for details of the offerings by and previous entry score ranges for JCs and MI ([www.moe.gov.sg/schoolfinder](http://www.moe.gov.sg/schoolfinder))
- CourseFinder for courses offered by the polytechnics and ITE, based on aggregate type and area of interest ([www.moe.gov.sg/coursefinder](http://www.moe.gov.sg/coursefinder))



# JAE Application

## Courses in Polytechnics



1 of 10



Showing 199 courses

### AI & Data Engineering

Course code: C31

✓ Admission Type: JAE, DAE, JPAE, Poly EAE, PFP

🏢 Nanyang Polytechnic

✓ 2023 JAE ELR2B2-C aggregate : 3 - 10



### Accountancy

Course code: N51

✓ Admission Type: JAE, DAE, JPAE, Poly EAE, PFP

🏢 Ngee Ann Polytechnic

✓ 2023 JAE ELR2B2-B aggregate : 4 - 12

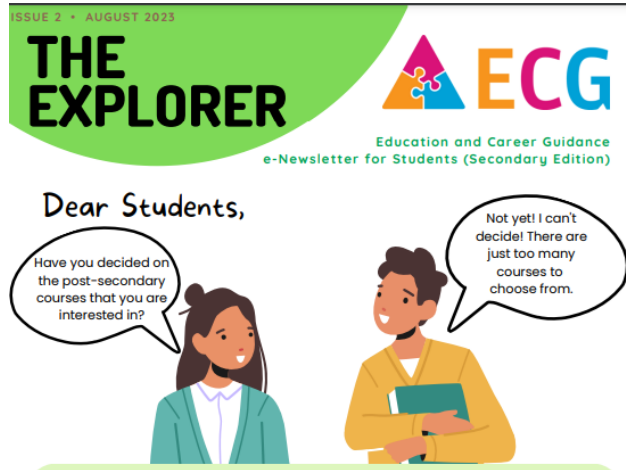


Serangoon Garden Secondary School

Established in 1959

Perseverance. Respect. Integrity. Diligence. Empathy

# How should you make your 12 choices for JAE



<https://file.go.gov.sg/2023-explorer-issue2-sec.pdf>



## How should you make your 12 choices for the JAE/ JIE?

**First 3 to 4 choices:** Consider courses that most align with your Values, Interests, Personality and Skills (V.I.P.S) and strengths.

**Next 3 to 4 choices:** Choose what you are interested in and stand a good chance of getting into. Consider the last aggregate scores of the courses (where your net score is within the range of last year's aggregate score). You can use **Course Finder** or **School Finder** to find out the aggregate scores.

**Last 3 to 4 choices:** Include alternative courses and institutions where the last aggregate scores are higher than yours. With this, your chances of securing a place will be higher.

**Be realistic, but still consider interests, strengths and career aspirations**  
**Embrace lifelong learning to remain relevant**

**Perseverance. Respect. Integrity. Diligence. Empathy**



# Release of JAE results

The posting results of the JAE application are scheduled for release on **Tuesday, 3 February 2026** through the following modes:

- a. Short Message Service (SMS) to the Singapore mobile phone number provided by the applicant during registration
- b. JAE-IS, which is accessible through the JAE website



Serangoon Garden Secondary School  
Established in 1959

Perseverance. Respect. Integrity. Diligence. Empathy

# Reporting to the next institution

Applicants posted to JCs and MI are to report to their posted institutions on **Wednesday, 4 February 2026**. If students are unable to report to their posted JC or MI on the first day of school due to valid reasons, they should contact their posted school directly to confirm that they are taking up the place, and the school will reserve the place for them.

Applicants posted to polytechnics or ITE will receive an email with the enrolment details on Tuesday, 3 February 2026, and applicants posted to polytechnics will receive their enrolment details by end-February 2026.



Serangoon Garden Secondary School  
Established in 1959

Perseverance. Respect. Integrity. Diligence. Empathy

# Appeal for review of results

1. The closing date for submission of appeal(s), including payment of appeal fees is **by Tuesday, 20 January 2026, 12 noon.**
2. **Candidates must pay the appeal fees via SEAB Candidates Portal before** the appeals can be submitted through the school.
3. The appeal fees (inclusive of GST) per subject is **\$125.**
4. Applications submitted after the closing date will not be considered.



Serangoon Garden Secondary School

Established in 1959

Perseverance. Respect. Integrity. Diligence. Empathy

# Additional Support for Students

Type	Notes
Computer access	V-hub, Must be in school uniform, <u>15 Jan, 16 Jan &amp; 19 Jan 2026 (8.30 a.m. to 4.30 p.m.),</u> Register with security first and then inform Mdm Rohana at General Office counter before going to V-hub.
ECG Counsellor	School, must be in school uniform <u>19 Jan 2026</u> Book slot at <a href="https://go.gov.sg/sgssecgc">go.gov.sg/sgssecgc</a> Register with security first Or you can email her
Any other support required	Message FTs or Mr Wong first



Serangoon Garden Secondary School

Established in 1959

Perseverance. Respect. Integrity. Diligence. Empathy

# Need Help with Your ECG Planning?



**MS SER YEE**

## CHAT WITH YOUR ECG COUNSELLOR



Monday  
Tuesday



8AM - 4PM



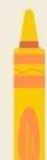
Library



**[go.gov.sg/sgssecgc](https://go.gov.sg/sgssecgc)**

Booking link/Scan QR code  
or Email  
[Lim\\_Ser\\_Yee\\_A@schools.gov.sg](mailto:Lim_Ser_Yee_A@schools.gov.sg)

**For Appointment Booking**



# Support for Parents

Link	Link Description (max 40 characters)
<a href="https://go.gov.sg/moe-ecg-centre">https://go.gov.sg/moe-ecg-centre</a>	Booking Form for ECG Counselling Appointments at the ECG Centre @ MOE
<a href="http://go.gov.sg/olevel-ecgparentresources">http://go.gov.sg/olevel-ecgparentresources</a>	Education and Career Guidance (ECG) Parent Resource
<a href="http://go.gov.sg/olevel-selparentresources">http://go.gov.sg/olevel-selparentresources</a>	Social and emotional learning: Resources for Parents



The O-Level is not the destination.

It is part of your education journey.

No matter what the results are, you must remember that your results do not determine who you are or how successful you will be in the future!

